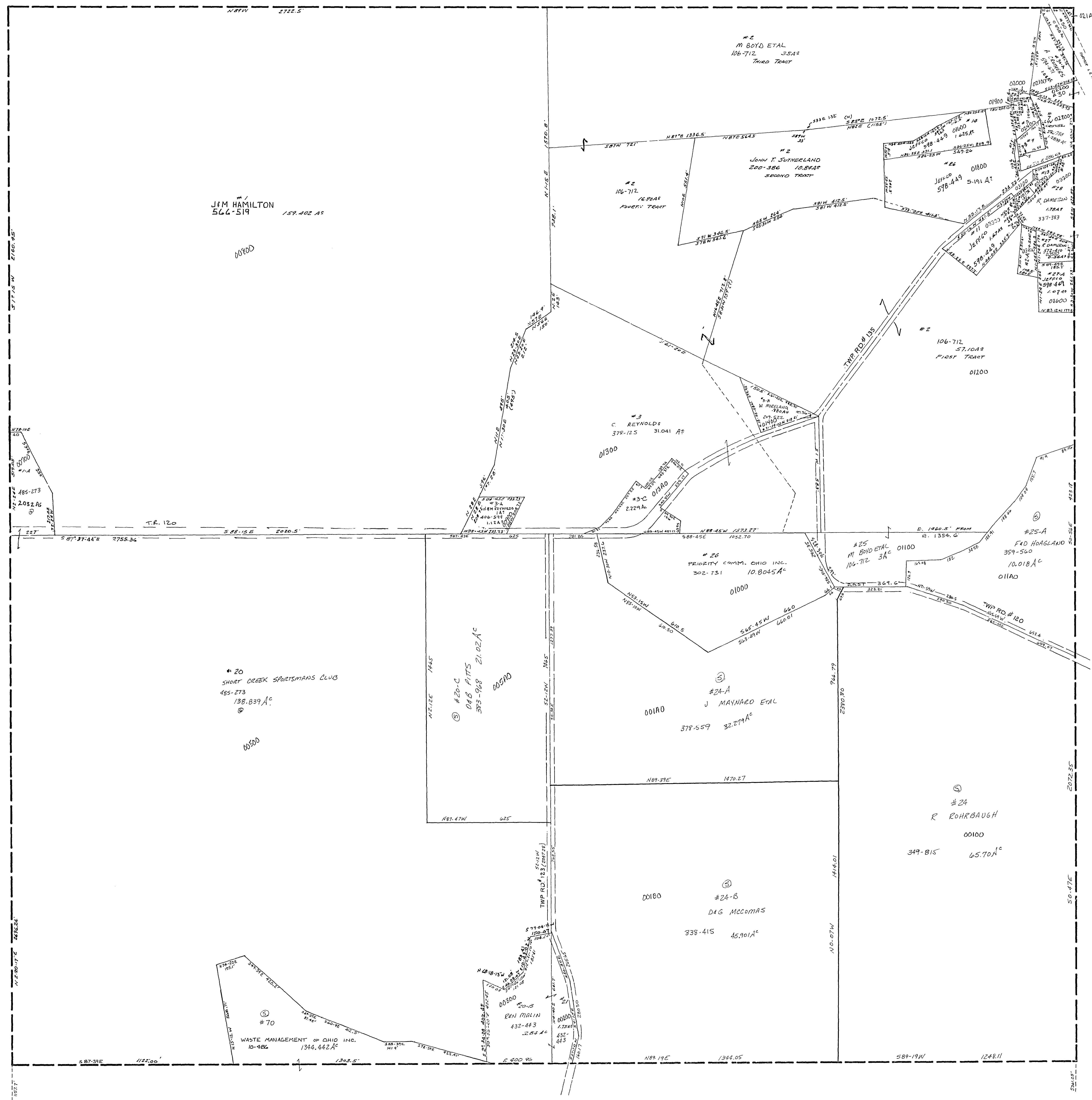


30-2800-

#2-A-1	WIS MANBECK	517-436	0.098A1
#2-A	R TAMERSON	302-5100	0.504A
#2	WIS MANBECK	517-436	0.334A1
#2-B	A HILSHUJ	240-415	0.0088A1
#3	JOHN LOGGART	120-328	0.22A1
#7	LEV CROTHERS	576-758	0.12A1
#8-A	"	"	.072A1
#8-B	"	"	.072A1
#10	R BROWN	407-92	.029A
#12	AMEL MARBAIS	107-18	.23A1 (OUT OF 28)
#13	DEL KACEL	104-826	.28A1
#9	M HODDINS ETAL	173-784	0.350A1
#17	HL SARGO	305-712	0.042A1
#2-B	LEV CROTHERS	576-758	0.05172A1
#30	D AKES	536-493	0.443A1
#8	LEV CROTHERS	576-758	.963A1
#20	WPTCO	625-177	0.858A1
#3-C	M PASTEL R. BROWNS	91-126	2.229A1



SMITHFIELD TWP.  
SEC. 28, T. 8, R. 3.  
SCALE 1" = 200'